



California Fragrance Company, Inc.

Contact Phone:
License #: OCM-PROC-000009
Sample ID: 5178



Phyto-Farma Labs
a Smithers company

CERTIFICATE OF ANALYSIS
Permit #: OCM-CPL-00004

Certificate: 5178.1

Wyld - Sour Tangerine Gummies - 100mg - 10ct

Lot #: NY TAN B1
Sample ID: 5178
Regulatory Category: Adult Use
Received: 06/21/2024
Sampling Location:

Lot Size: 2194
Sample Type: Edible
Amount Received: 13
Sample Collected: 06/21/2024 09:45 AM
Published: 06/26/2024



COMPLIANCE FOR RETAIL

Cannabinoid Profile Pass	Terpenes Total Tested	Residual Solvents Pass	Pass Sample Status
Pesticides Pass	Mycotoxins Pass	Water Activity Pass	0.245% Total THC
Trace Metals Pass	Microbial Contaminants Pass	Moisture Analysis Not Tested	<LOQ Total CBD
	Filth & Foreign Not Tested		0.257 % Total Cannabinoids

Report Notes: N/A

Alicia Caruso-Thomas
Laboratory Director

06/26/2024
Alicia Caruso-Thomas

Phyto-Farma Labs
49 John Hicks Drive
Warwick, NY 10990
(845) 988-0937



This is a Phyto-Farma certification that relates only to the material tested and shall not be reproduced, unless in its entirety, without written approval from Phyto-Farma. Test results are confidential, unless explicitly waived. All Pass/Fail results please reference state regulations released on 01FEB2024. Pass/Fail results do not use uncertainty, but is available upon request. The product represented has been tested by Phyto-Farma Labs using validated scientific methodologies. Note action levels are state determined thresholds for human safety and consumption. Acronym Definitions: ND - Not Detected, LOQ - Limit of Quantification, ULOQ - Upper Limit of Quantification; are terms used to describe the reliably measured smallest and largest concentrations. <LOQ> denotes the result is above detection limit, but below quantifiable limit. CFU - Colony Forming Units. Cannabis Product Sampling SOP# SOP.T.20.010.



Certificate: 5178.1

Average Cannabinoid Profile

Pass

Sample Analysis

Date: 06/26/2024 10:20 AM SOP: NY.SOPT.40.260
Analyzed By: HPLC Sample Weight: N/A
Analyst: Stephanie Knapp

Table with 5 columns: Analyte, LOQ (%), Average % (w/w), mg/serving, Homogeneity†. Rows include Total Tetrahydrocannabinol (THC), Total Cannabidiol (CBD), Total Active Tetrahydrocannabivarin (THCV), and Total Active Cannabigerol (CBG).

Summary table with 4 columns: Cannabinoid Totals, Actual % (w/w), mg/serving, Homogeneity†. Row: Total Cannabinoids, 0.257, 10.3.

* Analyte is not included in ISO 17025 scope of accreditation
† Concentration of individual samples must be ±25% of the mean concentration
Total Active CBD = CBD + (0.877 x CBDA); Total Active CBG = CBG + (0.878 x CBGA);
Total Active THC = (Δ9THC + Δ8THC + Δ10THC-RS + Δ10THC-RR) + (0.877 x THCA);
Total Active THCV = THCV + (0.867 x THCVA);

Serving Weight: 4 g

Alicia Caruso-Thomas
Laboratory Director

06/26/2024
Alicia Caruso-Thomas

Phyto-Farma Labs
49 John Hicks Drive
Warwick, NY 10990
(845) 988-0937





Certificate: 5178.1

Terpene Total

Tested (0.01000%)

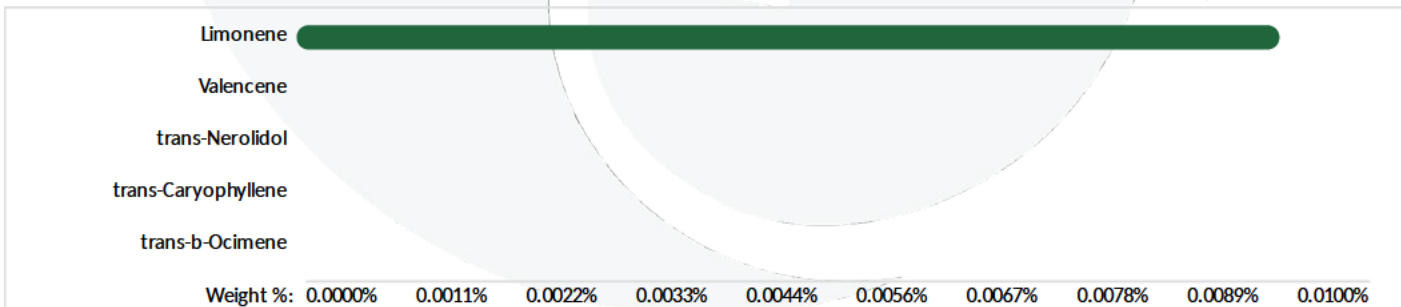
Sample Analysis

Date: 06/26/2024 02:50 PM SOP: NY.SOPT.40.090
Sample Weight: 0.481 g Analyzed By: GC-MS
Analyst: Stephanie Knapp

Table with 6 columns: Analyte, LOQ (%), Results (%), Analyte, LOQ (%), Results (%). Lists various terpenes and their detection levels.

Summary row: Terpene Totals, %, Pass/Fail

Total Terpenes 0.01000 N/A



Alicia Caruso-Thomas
Laboratory Director

06/26/2024
Alicia Caruso-Thomas

Phyto-Farma Labs
49 John Hicks Drive
Warwick, NY 10990
(845) 988-0937



This is a Phyto-Farma certification that relates only to the material tested and shall not be reproduced, unless in its entirety, without written approval from Phyto-Farma. Test results are confidential, unless explicitly waived.



Certificate: 5178.1

Trace Metals

Pass

Sample Analysis

Date: 06/26/2024 05:21 PM SOP: NY.SOPT.40.050
Analyzed By: ICP-MS Sample Weight: 0.1383 g
Analyst: Moni Kaneti

Analyte	LOQ (µg/g)	Action Limit (µg/g)	Results (µg/g)	Pass/Fail
Antimony (Sb)*	0.130	120	<LOQ	PASS
Arsenic (As)*	0.0700	1.50	<LOQ	PASS
Cadmium (Cd)*	0.0600	0.500	<LOQ	PASS
Chromium (Cr)*	0.360	1100	<LOQ	PASS
Copper (Cu)*	0.390	300	<LOQ	PASS
Lead (Pb)*	0.0800	0.500	<LOQ	PASS
Mercury (Hg)*	0.0100	3.00	<LOQ	PASS
Nickel (Ni)*	0.110	20.0	<LOQ	PASS

* Analyte is not included in ISO 17025 scope of accreditation

Mycotoxin Analysis

Pass

Sample Analysis

Date: 06/26/2024 03:25 PM SOP: NY.SOPT.40.180
Analyzed By: LC-MS/MS Sample Weight: 0.1 g
Analyst: Destiny Ribadeneyra

Analyte	LOQ (µg/g)	Action Limit (µg/g)	Results (µg/g)	Pass/Fail
Sum of Aflatoxins	-	0.020	0	PASS
Aflatoxin B1	0.0010	0.020	<LOQ	PASS
Aflatoxin B2	0.0020	0.020	<LOQ	PASS
Aflatoxin G1	0.0010	0.020	<LOQ	PASS
Aflatoxin G2	0.0020	0.020	<LOQ	PASS
Ochratoxin A	0.0020	0.020	<LOQ	PASS

Alicia Caruso-Thomas
Laboratory Director

06/26/2024
Alicia Caruso-Thomas

Phyto-Farma Labs
49 John Hicks Drive
Warwick, NY 10990
(845) 988-0937



This is a Phyto-Farma certification that relates only to the material tested and shall not be reproduced, unless in its entirety, without written approval from Phyto-Farma. Test results are confidential, unless explicitly waived. All Pass/Fail results please reference state regulations released on 01FEB2024. Pass/Fail results do not use uncertainty, but is available upon request. The product represented has been tested by Phyto-Farma Labs using validated scientific methodologies. Note action levels are state determined thresholds for human safety and consumption. Acronym Definitions: ND - Not Detected, LOQ - Limit of Quantification, ULOQ - Upper Limit of Quantification; are terms used to describe the reliably measured smallest and largest concentrations. <LOQ* denotes the result is above detection limit, but below quantifiable limit. CFU - Colony Forming Units. Cannabis Product Sampling SOP# SOP.T.20.010.



Certificate: 5178.1

Pesticides LC

Pass

Sample Analysis

Date: 06/25/2024 12:33 PM SOP: NY.SOPT.040.270
Analyzed By: LC-MS/MS Sample Weight: 1 g
Analyst: Stephanie Knapp

Table with 10 columns: Analyte, LOQ (ppm), Action Limit (ppm), Results (ppm), Pass/Fail. Contains two columns of pesticide analysis data.

* Analyte is not included in ISO 17025 scope of accreditation

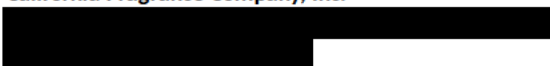
Alicia Caruso-Thomas
Laboratory Director

06/26/2024
Alicia Caruso-Thomas

Phyto-Farma Labs
49 John Hicks Drive
Warwick, NY 10990
(845) 988-0937



This is a Phyto-Farma certification that relates only to the material tested and shall not be reproduced, unless in its entirety, without written approval from Phyto-Farma. Test results are confidential, unless explicitly waived. All Pass/Fail results please reference state regulations released on 01FEB2024. Pass/Fail results do not use uncertainty, but is available upon request. The product represented has been tested by Phyto-Farma Labs using validated scientific methodologies. Note action levels are state determined thresholds for human safety and consumption. Acronym Definitions: ND - Not Detected, LOQ - Limit of Quantification, ULOQ - Upper Limit of Quantification; are terms used to describe the reliably measured smallest and largest concentrations. <LOQ* denotes the result is above detection limit, but below quantifiable limit. CFU - Colony Forming Units. Cannabis Product Sampling SOP# SOP.T.20.010.



Certificate: 5178.1

Pesticides GC

Pass

Sample Analysis

Date: 06/26/2024 04:03 PM SOP: NYS.SOPT.040.271
Analyzed By: GC-MS/MS Sample Weight: N/A
Analyst: Destiny Ribadeneyra

Analyte	LOQ (ppm)	Action Limit (ppm)	Results (ppm)	Pass/Fail
Captan*	0.300	1.00	<LOQ	PASS
Chlordane*	0.0700	1.00	<LOQ	PASS
Chlorfenapyr*	0.100	1.00	<LOQ	PASS
Coumaphos*	0.190	1.00	<LOQ	PASS
Cyfluthrin*	0.110	1.00	<LOQ	PASS
Cypermethrin*	0.240	1.00	<LOQ	PASS
Fipronil*	0.170	0.400	<LOQ	PASS
Imazalil*	0.170	0.200	<LOQ	PASS
Methyl parathion*	0.0900	0.200	<LOQ	PASS
Pentachloronitrobenzene*	0.170	1.00	<LOQ	PASS
Trifloxystrobin*	0.110	0.200	<LOQ	PASS

* Analyte is not included in ISO 17025 scope of accreditation

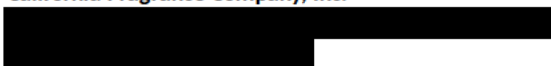
Alicia Caruso-Thomas
Laboratory Director

06/26/2024
Alicia Caruso-Thomas

Phyto-Farma Labs
49 John Hicks Drive
Warwick, NY 10990
(845) 988-0937



This is a Phyto-Farma certification that relates only to the material tested and shall not be reproduced, unless in its entirety, without written approval from Phyto-Farma. Test results are confidential, unless explicitly waived. All Pass/Fail results please reference state regulations released on 01FEB2024. Pass/Fail results do not use uncertainty, but is available upon request. The product represented has been tested by Phyto-Farma Labs using validated scientific methodologies. Note action levels are state determined thresholds for human safety and consumption. Acronym Definitions: ND - Not Detected, LOQ - Limit of Quantification, ULOQ - Upper Limit of Quantification; are terms used to describe the reliably measured smallest and largest concentrations. <LOQ* denotes the result is above detection limit, but below quantifiable limit. CFU - Colony Forming Units. Cannabis Product Sampling SOP# SOP.T.20.010.



Certificate: 5178.1

Residual Solvents

Pass

Sample Analysis

Date: 06/26/2024 01:29 PM

SOP: NYS.SOPT.040.272

Analyzed By: GC-MS

Sample Weight: 0.0966 g

Analyst: Destiny Ribadeneyra

Analyte	LOQ (ppm)	Action Limit (ppm)	Results (ppm)	Pass/Fail
1,2-Dichloroethane (Ethylene dichloride, Ethylene chloride)	0.670	5.00	<LOQ	PASS
2-Propanol (Isopropanol, Isopropyl alcohol)	21.7	5000	<LOQ	PASS
Acetone (2-Propanone)	15.9	5000	<LOQ	PASS
Acetonitrile	0.850	410	<LOQ	PASS
Benzene	0.710	2.00	<LOQ	PASS
Butanes, Total	4.85	5000	<LOQ	PASS
Chloroform	0.540	60.0	<LOQ	PASS
Dichloromethane (Methylene chloride)	1.07	600	<LOQ	PASS
Dimethyl sulfoxide (DMSO)	0.660	5000	<LOQ	PASS
Ethanol (Ethyl alcohol)	10.0	5000	<LOQ	PASS
Ethyl acetate (Acetic acid ethyl ester)	18.4	5000	<LOQ	PASS
Ethyl ether (Diethyl ether, 1,1'-Oxybisethane)	0.440	5000	<LOQ	PASS
Heptane (n-Heptane)	0.360	5000	<LOQ	PASS
Hexanes, Total	0.420	290	<LOQ	PASS
Methanol (Methyl alcohol)	2.47	3000	<LOQ	PASS
Pentanes, Total	0.370	5000	<LOQ	PASS
Propane	0.530	5000	<LOQ	PASS
Toluene (Methylbenzene)	2.34	890	<LOQ	PASS
Trichloroethane (1,1,1-)	0.410	1500	<LOQ	PASS
Tetrafluoroethane (1,1,1,2-) (HFC134a)*	10.0	1000	<LOQ	PASS
Xylenes, Total (ortho-, meta-, para-)	3.63	2170	<LOQ	PASS

* Analyte is not included in ISO 17025 scope of accreditation

Alicia Caruso-Thomas
Laboratory Director

06/26/2024
Alicia Caruso-Thomas

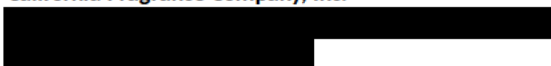
Phyto-Farma Labs
49 John Hicks Drive
Warwick, NY 10990
(845) 988-0937



This is a Phyto-Farma certification that relates only to the material tested and shall not be reproduced, unless in its entirety, without written approval from Phyto-Farma. Test results are confidential, unless explicitly waived. All Pass/Fail results please reference state regulations released on 01FEB2024. Pass/Fail results do not use uncertainty, but is available upon request. The product represented has been tested by Phyto-Farma Labs using validated scientific methodologies. Note action levels are state determined thresholds for human safety and consumption. Acronym Definitions: ND - Not Detected, LOQ - Limit of Quantification, ULOQ - Upper Limit of Quantification; are terms used to describe the reliably measured smallest and largest concentrations. <LOQ* denotes the result is above detection limit, but below quantifiable limit. CFU - Colony Forming Units. Cannabis Product Sampling SOP# SOP.T.20.010.



California Fragrance Company, Inc.



Contact Phone:
License #: OCM-PROC-000009
Sample ID: 5178

Certificate: 5178.1

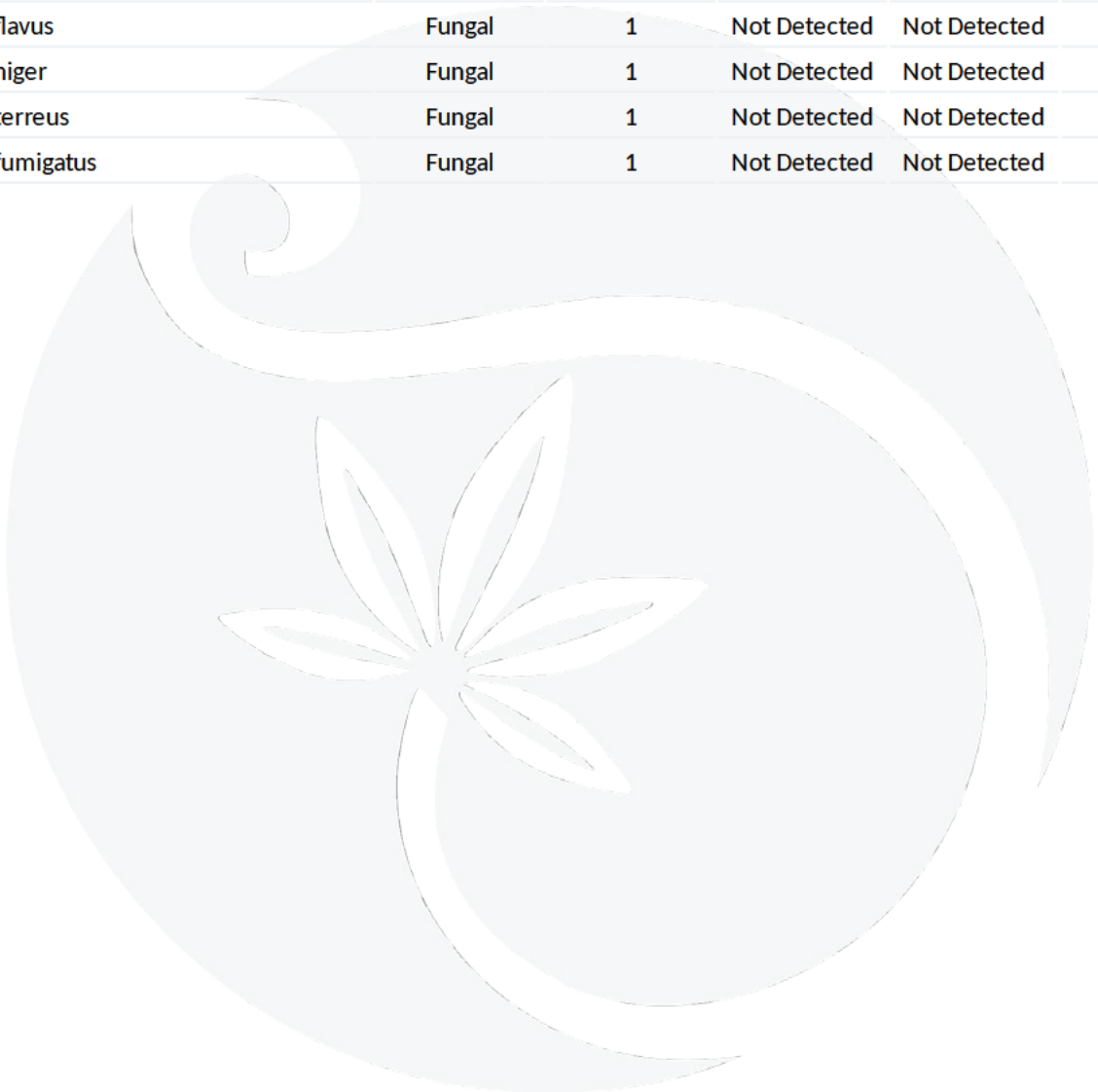
Microbial Impurities - MDG

Pass

Sample Analysis

Date: 06/26/2024 08:54 AM SOP: NYS.SOPT.40.273
Analyzed By: PCR
Analyst: Kristy Lee

Analyte	Microbial Type	LOQ (CFU/g)	Allowable Limit	Results	Pass/Fail
Shiga toxin-producing Escherichia coli	Bacterial	1	Not Detected	Not Detected	PASS
Salmonella species	Bacterial	1	Not Detected	Not Detected	PASS
Aspergillus flavus	Fungal	1	Not Detected	Not Detected	PASS
Aspergillus niger	Fungal	1	Not Detected	Not Detected	PASS
Aspergillus terreus	Fungal	1	Not Detected	Not Detected	PASS
Aspergillus fumigatus	Fungal	1	Not Detected	Not Detected	PASS



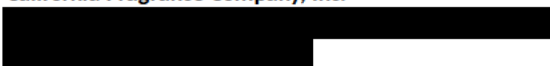
Alicia Caruso-Thomas
Laboratory Director

06/26/2024
Alicia Caruso-Thomas

Phyto-Farma Labs
49 John Hicks Drive
Warwick, NY 10990
(845) 988-0937



This is a Phyto-Farma certification that relates only to the material tested and shall not be reproduced, unless in its entirety, without written approval from Phyto-Farma. Test results are confidential, unless explicitly waived. All Pass/Fail results please reference state regulations released on 01FEB2024. Pass/Fail results do not use uncertainty, but is available upon request. The product represented has been tested by Phyto-Farma Labs using validated scientific methodologies. Note action levels are state determined thresholds for human safety and consumption. Acronym Definitions: ND - Not Detected, LOQ - Limit of Quantification, ULOQ - Upper Limit of Quantification; are terms used to describe the reliably measured smallest and largest concentrations. <LOQ> denotes the result is above detection limit, but below quantifiable limit. CFU - Colony Forming Units. Cannabis Product Sampling SOP# SOP.T.20.010.



Certificate: 5178.1

Microbial Impurities - TAPC

Pass

Sample Analysis

Date: 06/26/2024 03:07 PM SOP: NYS.SOPT.040.200
Analyzed By: Plating
Analyst: Lindsey Vento

Analyte	LOQ (CFU/g)	Action Limit (CFU/g)	Results (CFU/g)	Pass/Fail
Total Aerobic Bacteria/CDP-TC	5	10000	<LOQ	PASS

Microbial Impurities - TYMC

Pass

Sample Analysis

Date: 06/24/2024 04:51 PM SOP: NYS.SOPT.040.200
Analyzed By: Plating
Analyst: Kristy Lee

Analyte	LOQ (CFU/g)	Action Limit (CFU/g)	Results (CFU/g)	Pass/Fail
Total Yeast and Mold	5	1000	<LOQ	PASS
Mold Count	5	1000	<LOQ	PASS
Yeast Count	5	1000	<LOQ	PASS

Water Activity

Pass

Sample Analysis

Date: 06/26/2024 09:27 AM SOP: NY.SOPT.040.210
Analyzed By: Water Activity Meter
Analyst: Stephanie Knapp

Analyte	LOQ (Aw)	Action Limit (Aw)	Results (Aw)	Pass/Fail
Water Activity	0.25	0.85	0.68	PASS

Alicia Caruso-Thomas
Laboratory Director

06/26/2024
Alicia Caruso-Thomas

Phyto-Farma Labs
49 John Hicks Drive
Warwick, NY 10990
(845) 988-0937



This is a Phyto-Farma certification that relates only to the material tested and shall not be reproduced, unless in its entirety, without written approval from Phyto-Farma. Test results are confidential, unless explicitly waived. All Pass/Fail results please reference state regulations released on 01FEB2024. Pass/Fail results do not use uncertainty, but is available upon request. The product represented has been tested by Phyto-Farma Labs using validated scientific methodologies. Note action levels are state determined thresholds for human safety and consumption. Acronym Definitions: ND - Not Detected, LOQ - Limit of Quantification, ULOQ - Upper Limit of Quantification; are terms used to describe the reliably measured smallest and largest concentrations. <LOQ* denotes the result is above detection limit, but below quantifiable limit. CFU - Colony Forming Units. Cannabis Product Sampling SOP# SOP.T.20.010.