



California Fragrance Company, Inc.

Contact Phone:  
License #: OCM-PROC-000009  
Sample ID: 5176



**Phyto-Farma Labs**  
a Smithers company

**CERTIFICATE OF ANALYSIS**  
Permit #: OCM-CPL-00004

Certificate: 5176.1

## Wyld - Grapefruit Gummies - 100mg THC : 100mg CBG : 100mg CBC - 10ct

Lot #: NY GF B1  
Sample ID: 5176  
Regulatory Category: Adult Use  
Received: 06/21/2024  
Sampling Location: [REDACTED]

Lot Size: 3991  
Sample Type: Edible  
Amount Received: 20  
Sample Collected: 06/21/2024 09:47 AM  
Published: 06/26/2024



## COMPLIANCE FOR RETAIL

Cannabinoid Profile <b>Pass</b>	Terpenes Total <b>Tested</b>	Residual Solvents <b>Pass</b>	<b>Pass</b> Sample Status
Pesticides <b>Pass</b>	Mycotoxins <b>Pass</b>	Water Activity <b>Pass</b>	<b>0.249%</b> Total THC
Trace Metals <b>Pass</b>	Microbial Contaminants <b>Pass</b>	Moisture Analysis <b>Not Tested</b>	<b>0.00199%</b> Total CBD
	Filth & Foreign <b>Not Tested</b>		<b>0.742 %</b> Total Cannabinoids

Report Notes: N/A

Alicia Caruso-Thomas  
Laboratory Director

06/26/2024  
*Alicia Caruso-Thomas*

Phyto-Farma Labs  
49 John Hicks Drive  
Warwick, NY 10990  
(845) 988-0937



This is a Phyto-Farma certification that relates only to the material tested and shall not be reproduced, unless in its entirety, without written approval from Phyto-Farma. Test results are confidential, unless explicitly waived. All Pass/Fail results please reference state regulations released on 01FEB2024. Pass/Fail results do not use uncertainty, but is available upon request. The product represented has been tested by Phyto-Farma Labs using validated scientific methodologies. Note action levels are state determined thresholds for human safety and consumption. Acronym Definitions: ND - Not Detected, LOQ - Limit of Quantification, ULOQ - Upper Limit of Quantification; are terms used to describe the reliably measured smallest and largest concentrations. <LOQ> denotes the result is above detection limit, but below quantifiable limit. CFU - Colony Forming Units. Cannabis Product Sampling SOP# SOP.T.20.010.



Certificate: 5176.1

### Average Cannabinoid Profile

**Pass**

### Sample Analysis

Date: 06/26/2024 10:17 AM      SOP: NY.SOPT.40.260  
Analyzed By: HPLC      Sample Weight: N/A  
Analyst: Stephanie Knapp

Analyte	LOQ (%)	Average % (w/w)	mg/serving	Homogeneity <sup>†</sup>
Total Tetrahydrocannabinol (THC)	-	0.249	9.97	
Tetrahydrocannabinolic acid (THCA)	0.500	<LOQ	<LOQ	
Δ8-THC	0.500	<LOQ	<LOQ	
Δ9-THC	0.500	0.249	9.97	
Δ10-THC-RS	0.500	<LOQ	<LOQ	
Δ10-THC-RR	0.500	<LOQ	<LOQ	
Total Cannabidiol (CBD)	-	0.00199	0.0797	
Cannabinadiolic acid (CBDA)	0.500	0.00227	0.0908	
Cannabidiol (CBD)	0.500	<LOQ	<LOQ	
Total Active Tetrahydrocannabivarin (THCV)	-	0.00106	0.0423	
Tetrahydrocannabivarinic acid (THCVA)*	0.500	<LOQ	<LOQ	
Tetrahydrocannabivarin (THCV)	0.500	0.00106	0.0423	
Total Active Cannabigerol (CBG)	-	0.244	9.78	
Cannabigerolic acid (CBGA)	0.500	<LOQ	<LOQ	
Cannabigerol (CBG)	0.500	0.244	9.78	
Cannabidivarin (CBDV)	0.500	0.000538	0.0215	
Cannabinol (CBN)	0.500	0.00765	0.306	
Cannabichromene (CBC)	0.500	0.237	9.49	
Cannabinoid Totals	Actual % (w/w)	mg/serving	Homogeneity <sup>†</sup>	
Total Cannabinoids	0.742	29.7		

\* Analyte is not included in ISO 17025 scope of accreditation  
† Concentration of individual samples must be ±25% of the mean concentration  
Total Active CBD = CBD + (0.877 x CBDA); Total Active CBG = CBG + (0.878 x CBGA);  
Total Active THC = (Δ9THC + Δ8THC + Δ10THC-RS + Δ10THC-RR) + (0.877 x THCA);  
Total Active THCV = THCV + (0.867 x THCVA);

Serving Weight: 4g

Alicia Caruso-Thomas  
Laboratory Director

06/26/2024  
*Alicia Caruso-Thomas*

Phyto-Farma Labs  
49 John Hicks Drive  
Warwick, NY 10990  
(845) 988-0937





Certificate: 5176.1

Terpene Total

Tested (0.01000%)

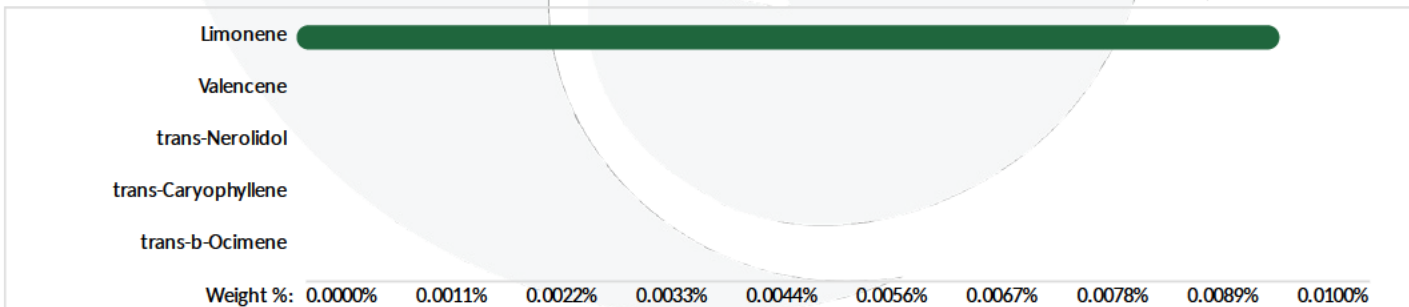
Sample Analysis

Date: 06/26/2024 02:50 PM SOP: NY.SOPT.40.090
Sample Weight: 0.489 g Analyzed By: GC-MS
Analyst: Stephanie Knapp

Table with 6 columns: Analyte, LOQ (%), Results (%), Analyte, LOQ (%), Results (%). Lists various terpenes and their detection levels.

Summary row: Terpene Totals, %, Pass/Fail

Total Terpenes 0.01000 N/A



Alicia Caruso-Thomas
Laboratory Director

06/26/2024
Alicia Caruso-Thomas

Phyto-Farma Labs
49 John Hicks Drive
Warwick, NY 10990
(845) 988-0937



This is a Phyto-Farma certification that relates only to the material tested and shall not be reproduced, unless in its entirety, without written approval from Phyto-Farma. Test results are confidential, unless explicitly waived. All Pass/Fail results please reference state regulations released on 01FEB2024. Pass/Fail results do not use uncertainty, but is available upon request. The product represented has been tested by Phyto-Farma Labs using validated scientific methodologies. Note action levels are state determined thresholds for human safety and consumption. Acronym Definitions: ND - Not Detected, LOQ - Limit of Quantification, ULOQ - Upper Limit of Quantification; are terms used to describe the reliably measured smallest and largest concentrations. <LOQ> denotes the result is above detection limit, but below quantifiable limit. CFU - Colony Forming Units. Cannabis Product Sampling SOP# SOP.T.20.010.



Certificate: 5176.1

### Trace Metals

Pass

### Sample Analysis

Date: 06/26/2024 05:21 PM      SOP: NY.SOPT.40.050  
Analyzed By: ICP-MS      Sample Weight: 0.1298 g  
Analyst: Moni Kaneti

Analyte	LOQ (µg/g)	Action Limit (µg/g)	Results (µg/g)	Pass/Fail
Antimony (Sb)*	0.130	120	<LOQ	PASS
Arsenic (As)*	0.0700	1.50	<LOQ	PASS
Cadmium (Cd)*	0.0600	0.500	<LOQ	PASS
Chromium (Cr)*	0.360	1100	<LOQ	PASS
Copper (Cu)*	0.390	300	<LOQ	PASS
Lead (Pb)*	0.0800	0.500	<LOQ	PASS
Mercury (Hg)*	0.0100	3.00	<LOQ	PASS
Nickel (Ni)*	0.110	20.0	<LOQ	PASS

\* Analyte is not included in ISO 17025 scope of accreditation

### Mycotoxin Analysis

Pass

### Sample Analysis

Date: 06/26/2024 03:25 PM      SOP: NY.SOPT.40.180  
Analyzed By: LC-MS/MS      Sample Weight: 0.1 g  
Analyst: Destiny Ribadeneyra

Analyte	LOQ (µg/g)	Action Limit (µg/g)	Results (µg/g)	Pass/Fail
Sum of Aflatoxins	-	0.020	0	PASS
Aflatoxin B1	0.0010	0.020	<LOQ	PASS
Aflatoxin B2	0.0020	0.020	<LOQ	PASS
Aflatoxin G1	0.0010	0.020	<LOQ	PASS
Aflatoxin G2	0.0020	0.020	<LOQ	PASS
Ochratoxin A	0.0020	0.020	<LOQ	PASS

Alicia Caruso-Thomas  
Laboratory Director

06/26/2024  
*Alicia Caruso-Thomas*

Phyto-Farma Labs  
49 John Hicks Drive  
Warwick, NY 10990  
(845) 988-0937



This is a Phyto-Farma certification that relates only to the material tested and shall not be reproduced, unless in its entirety, without written approval from Phyto-Farma. Test results are confidential, unless explicitly waived. All Pass/Fail results please reference state regulations released on 01FEB2024. Pass/Fail results do not use uncertainty, but is available upon request. The product represented has been tested by Phyto-Farma Labs using validated scientific methodologies. Note action levels are state determined thresholds for human safety and consumption. Acronym Definitions: ND - Not Detected, LOQ - Limit of Quantification, ULOQ - Upper Limit of Quantification; are terms used to describe the reliably measured smallest and largest concentrations. <LOQ\* denotes the result is above detection limit, but below quantifiable limit. CFU - Colony Forming Units. Cannabis Product Sampling SOP# SOP.T.20.010.



Certificate: 5176.1

Pesticides LC

Pass

Sample Analysis

Date: 06/25/2024 12:33 PM SOP: NY.SOPT.040.270
Analyzed By: LC-MS/MS Sample Weight: 1 g
Analyst: Stephanie Knapp

Table with 10 columns: Analyte, LOQ (ppm), Action Limit (ppm), Results (ppm), Pass/Fail. Contains two columns of pesticide analysis data.

\* Analyte is not included in ISO 17025 scope of accreditation

Alicia Caruso-Thomas
Laboratory Director

06/26/2024
Alicia Caruso-Thomas

Phyto-Farma Labs
49 John Hicks Drive
Warwick, NY 10990
(845) 988-0937



This is a Phyto-Farma certification that relates only to the material tested and shall not be reproduced, unless in its entirety, without written approval from Phyto-Farma. Test results are confidential, unless explicitly waived. All Pass/Fail results please reference state regulations released on 01FEB2024. Pass/Fail results do not use uncertainty, but is available upon request. The product represented has been tested by Phyto-Farma Labs using validated scientific methodologies. Note action levels are state determined thresholds for human safety and consumption. Acronym Definitions: ND - Not Detected, LOQ - Limit of Quantification, ULOQ - Upper Limit of Quantification; are terms used to describe the reliably measured smallest and largest concentrations. <LOQ\* denotes the result is above detection limit, but below quantifiable limit. CFU - Colony Forming Units. Cannabis Product Sampling SOP# SOP.T.20.010.



California Fragrance Company, Inc.

Contact Phone:  
License #: OCM-PROC-000009  
Sample ID: 5176

Certificate: 5176.1

### Pesticides GC

Pass

### Sample Analysis

Date: 06/26/2024 04:03 PM      SOP: NYS.SOPT.040.271  
Analyzed By: GC-MS/MS      Sample Weight: N/A  
Analyst: Destiny Ribadeneyra

Analyte	LOQ (ppm)	Action Limit (ppm)	Results (ppm)	Pass/Fail
Captan*	0.300	1.00	<LOQ	PASS
Chlordane*	0.0700	1.00	<LOQ	PASS
Chlorfenapyr*	0.100	1.00	<LOQ	PASS
Coumaphos*	0.190	1.00	<LOQ	PASS
Cyfluthrin*	0.110	1.00	<LOQ	PASS
Cypermethrin*	0.240	1.00	<LOQ	PASS
Fipronil*	0.170	0.400	<LOQ	PASS
Imazalil*	0.170	0.200	<LOQ	PASS
Methyl parathion*	0.0900	0.200	<LOQ	PASS
Pentachloronitrobenzene*	0.170	1.00	<LOQ	PASS
Trifloxystrobin*	0.110	0.200	<LOQ	PASS

\* Analyte is not included in ISO 17025 scope of accreditation

Alicia Caruso-Thomas  
Laboratory Director

06/26/2024  
*Alicia Caruso-Thomas*

Phyto-Farma Labs  
49 John Hicks Drive  
Warwick, NY 10990  
(845) 988-0937



This is a Phyto-Farma certification that relates only to the material tested and shall not be reproduced, unless in its entirety, without written approval from Phyto-Farma. Test results are confidential, unless explicitly waived. All Pass/Fail results please reference state regulations released on 01FEB2024. Pass/Fail results do not use uncertainty, but is available upon request. The product represented has been tested by Phyto-Farma Labs using validated scientific methodologies. Note action levels are state determined thresholds for human safety and consumption. Acronym Definitions: ND - Not Detected, LOQ - Limit of Quantification, ULOQ - Upper Limit of Quantification; are terms used to describe the reliably measured smallest and largest concentrations. <LOQ\* denotes the result is above detection limit, but below quantifiable limit. CFU - Colony Forming Units. Cannabis Product Sampling SOP# SOP.T.20.010.



Certificate: 5176.1

### Residual Solvents

Pass

### Sample Analysis

Date: 06/26/2024 01:29 PM      SOP: NYS.SOPT.040.272  
Analyzed By: GC-MS      Sample Weight: N/A  
Analyst: Destiny Ribadeneyra

Analyte	LOQ (ppm)	Action Limit (ppm)	Results (ppm)	Pass/Fail
1,2-Dichloroethane (Ethylene dichloride, Ethylene chloride)	0.670	5.00	<LOQ	#DIV/0!
2-Propanol (Isopropanol, Isopropyl alcohol)	21.7	5000	<LOQ	#DIV/0!
Acetone (2-Propanone)	15.9	5000	<LOQ	#DIV/0!
Acetonitrile	0.850	410	<LOQ	#DIV/0!
Benzene	0.710	2.00	<LOQ	#DIV/0!
Butanes, Total	4.85	5000	<LOQ	#DIV/0!
Chloroform	0.540	60.0	<LOQ	#DIV/0!
Dichloromethane (Methylene chloride)	1.07	600	<LOQ	#DIV/0!
Dimethyl sulfoxide (DMSO)	0.660	5000	<LOQ	#DIV/0!
Ethanol (Ethyl alcohol)	10.0	5000	<LOQ	#DIV/0!
Ethyl acetate (Acetic acid ethyl ester)	18.4	5000	<LOQ	#DIV/0!
Ethyl ether (Diethyl ether, 1,1'-Oxybisethane)	0.440	5000	<LOQ	#DIV/0!
Heptane (n-Heptane)	0.360	5000	<LOQ	#DIV/0!
Hexanes, Total	0.420	290	<LOQ	#DIV/0!
Methanol (Methyl alcohol)	2.47	3000	<LOQ	#DIV/0!
Pentanes, Total	0.370	5000	<LOQ	#DIV/0!
Propane	0.530	5000	<LOQ	#DIV/0!
Toluene (Methylbenzene)	2.34	890	<LOQ	#DIV/0!
Trichloroethane (1,1,1-)	0.410	1500	<LOQ	#DIV/0!
Tetrafluoroethane (1,1,1,2-) (HFC134a)*	10.0	1000	<LOQ	#DIV/0!
Xylenes, Total (ortho-, meta-, para-)	3.63	2170	<LOQ	#DIV/0!

\* Analyte is not included in ISO 17025 scope of accreditation

Alicia Caruso-Thomas  
Laboratory Director

06/26/2024  
*Alicia Caruso-Thomas*

Phyto-Farma Labs  
49 John Hicks Drive  
Warwick, NY 10990  
(845) 988-0937



This is a Phyto-Farma certification that relates only to the material tested and shall not be reproduced, unless in its entirety, without written approval from Phyto-Farma. Test results are confidential, unless explicitly waived. All Pass/Fail results please reference state regulations released on 01FEB2024. Pass/Fail results do not use uncertainty, but is available upon request. The product represented has been tested by Phyto-Farma Labs using validated scientific methodologies. Note action levels are state determined thresholds for human safety and consumption. Acronym Definitions: ND - Not Detected, LOQ - Limit of Quantification, ULOQ - Upper Limit of Quantification; are terms used to describe the reliably measured smallest and largest concentrations. <LOQ\* denotes the result is above detection limit, but below quantifiable limit. CFU - Colony Forming Units. Cannabis Product Sampling SOP# SOP.T.20.010.



California Fragrance Company, Inc.

Contact Phone:  
License #: OCM-PROC-000009  
Sample ID: 5176



**Phyto-Farma Labs**  
a Smithers company

**CERTIFICATE OF ANALYSIS**  
Permit #: OCM-CPL-00004

Certificate: 5176.1

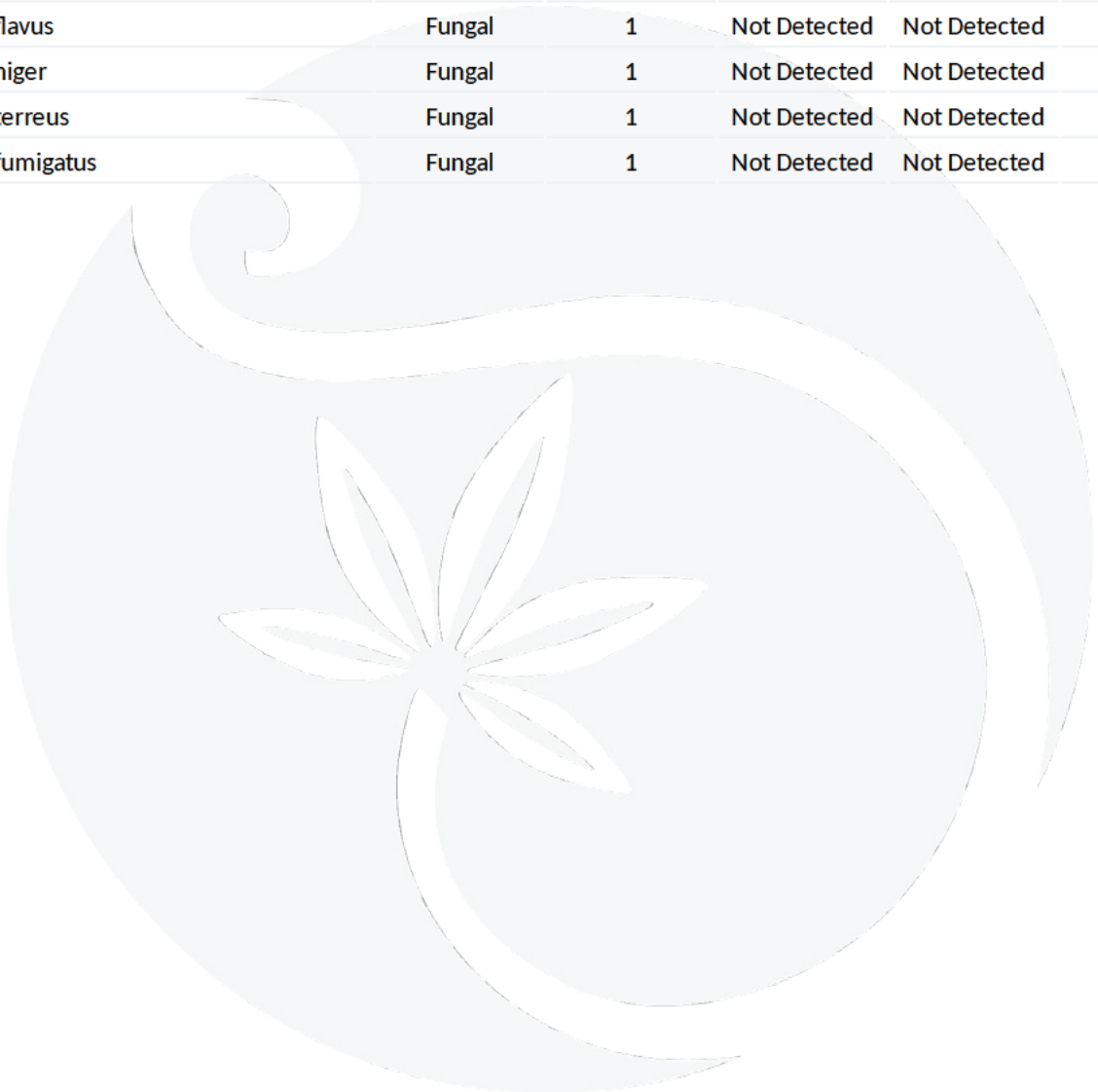
### Microbial Impurities - MDG

**Pass**

### Sample Analysis

Date: 06/26/2024 08:54 AM      SOP: NYS.SOPT.40.273  
Analyzed By: PCR  
Analyst: Kristy Lee

Analyte	Microbial Type	LOQ (CFU/g)	Allowable Limit	Results	Pass/Fail
Shiga toxin-producing Escherichia coli	Bacterial	1	Not Detected	Not Detected	PASS
Salmonella species	Bacterial	1	Not Detected	Not Detected	PASS
Aspergillus flavus	Fungal	1	Not Detected	Not Detected	PASS
Aspergillus niger	Fungal	1	Not Detected	Not Detected	PASS
Aspergillus terreus	Fungal	1	Not Detected	Not Detected	PASS
Aspergillus fumigatus	Fungal	1	Not Detected	Not Detected	PASS



Alicia Caruso-Thomas  
Laboratory Director

06/26/2024  
*Alicia Caruso-Thomas*

Phyto-Farma Labs  
49 John Hicks Drive  
Warwick, NY 10990  
(845) 988-0937



This is a Phyto-Farma certification that relates only to the material tested and shall not be reproduced, unless in its entirety, without written approval from Phyto-Farma. Test results are confidential, unless explicitly waived. All Pass/Fail results please reference state regulations released on 01FEB2024. Pass/Fail results do not use uncertainty, but is available upon request. The product represented has been tested by Phyto-Farma Labs using validated scientific methodologies. Note action levels are state determined thresholds for human safety and consumption. Acronym Definitions: ND - Not Detected, LOQ - Limit of Quantification, ULOQ - Upper Limit of Quantification; are terms used to describe the reliably measured smallest and largest concentrations. <LOQ> denotes the result is above detection limit, but below quantifiable limit. CFU - Colony Forming Units. Cannabis Product Sampling SOP# SOP.T.20.010.





California Fragrance Company, Inc.

Contact Phone:  
License #: OCM-PROC-000009  
Sample ID: 5176



**Phyto-Farma Labs**  
a Smithers company

**CERTIFICATE OF ANALYSIS**  
Permit #: OCM-CPL-00004

Certificate: 5176.1

### Microbial Impurities - TAPC

Pass

#### Sample Analysis

Date: 06/26/2024 03:07 PM      SOP: NYS.SOPT.040.200  
Analyzed By: Plating  
Analyst: Lindsey Vento

Analyte	LOQ (CFU/g)	Action Limit (CFU/g)	Results (CFU/g)	Pass/Fail
Total Aerobic Bacteria/CDP-TC	5	10000	<LOQ	PASS

### Microbial Impurities - TYMC

Pass

#### Sample Analysis

Date: 06/24/2024 04:51 PM      SOP: NYS.SOPT.040.200  
Analyzed By: Plating  
Analyst: Kristy Lee

Analyte	LOQ (CFU/g)	Action Limit (CFU/g)	Results (CFU/g)	Pass/Fail
Total Yeast and Mold	5	1000	<LOQ	PASS
Mold Count	5	1000	<LOQ	PASS
Yeast Count	5	1000	<LOQ	PASS

### Water Activity

Pass

#### Sample Analysis

Date: 06/26/2024 09:27 AM      SOP: NY.SOPT.040.210  
Analyzed By: Water Activity Meter  
Analyst: Stephanie Knapp

Analyte	LOQ (Aw)	Action Limit (Aw)	Results (Aw)	Pass/Fail
Water Activity	0.25	0.85	0.66	PASS

Alicia Caruso-Thomas  
Laboratory Director

06/26/2024  
*Alicia Caruso-Thomas*

Phyto-Farma Labs  
49 John Hicks Drive  
Warwick, NY 10990  
(845) 988-0937



This is a Phyto-Farma certification that relates only to the material tested and shall not be reproduced, unless in its entirety, without written approval from Phyto-Farma. Test results are confidential, unless explicitly waived. All Pass/Fail results please reference state regulations released on 01FEB2024. Pass/Fail results do not use uncertainty, but is available upon request. The product represented has been tested by Phyto-Farma Labs using validated scientific methodologies. Note action levels are state determined thresholds for human safety and consumption. Acronym Definitions: ND - Not Detected, LOQ - Limit of Quantification, ULOQ - Upper Limit of Quantification; are terms used to describe the reliably measured smallest and largest concentrations. <LOQ\* denotes the result is above detection limit, but below quantifiable limit. CFU - Colony Forming Units. Cannabis Product Sampling SOP# SOP.T.20.010.