



California Fragrance Company, Inc.

Contact Name:
Contact Phone:
License #: OCM-PROC-000009
Sample ID: 2409SMNY0084.0317



Phyto-Farma Labs
a Smithers company

CERTIFICATE OF ANALYSIS
Permit #: OCM-CPL-00004

Certificate: 6177.2

Wyld - Blood Orange Gummies - 10mg THC : 10mg CBC 10ct

Lot #: NY BO B5
Sample ID: 2409SMNY0084.0317
Regulatory Category: Adult Use
Received: 09/09/2024
Sampling Location: [REDACTED]

Lot Size: 4481
Sample Type: Edible
Amount Received: 4
Sample Collected: 09/09/2024 10:17 AM
Published: 09/12/2024



COMPLIANCE FOR RETAIL

| | | | |
|------------------------------------|---------------------------------------|--|--------------------------------------|
| Cannabinoid Profile Pass | Terpenes Total Tested | Residual Solvents Pass | Pass Sample Status |
| Pesticides Pass | Mycotoxins Pass | Water Activity Pass | 0.273% Total THC |
| Trace Metals Pass | Microbial Contaminants Pass | Moisture Analysis Not Tested | 0.00194% Total CBD |
| | Filth & Foreign Not Tested | | 0.544 % Total Cannabinoids |

Report Notes: Amended: Corrected comments section - N/A

Lindsey Vento 09/12/2024
Micro Director

Lindsey Vento

Phyto-Farma Labs
49 John Hicks Drive
Warwick, NY 10990
(845) 202-9737



This is a Phyto-Farma certification that relates only to the material tested and shall not be reproduced, unless in its entirety, without written approval from Phyto-Farma. Test results are confidential, unless explicitly waived. All Pass/Fail results please reference state regulations released on 01FEB2024. Pass/Fail results do not use uncertainty, but is available upon request. The product represented has been tested by Phyto-Farma Labs using validated scientific methodologies. Note action levels are state determined thresholds for human safety and consumption. Acronym Definitions: ND - Not Detected, LOQ - Limit of Quantification, ULOQ - Upper Limit of Quantification; are terms used to describe the reliably measured smallest and largest concentrations. <LOQ> denotes the result is above detection limit, but below quantifiable limit. CFU - Colony Forming Units. Cannabis Product Sampling SOP# SOP.T.20.010.



Certificate: 6177.2

Average Cannabinoid Profile

Pass

Sample Analysis

Date: 09/12/2024 01:28 PM SOP: NY.SOPT.40.260
Analyzed By: HPLC Sample Weight: N/A
Analyst: Stephanie Knapp

| Analyte | LOQ (%) | Average % (w/w) | mg/serving | Homogeneity [†] |
|--|---------|-----------------|------------|--------------------------|
| Total Tetrahydrocannabinol (THC) | - | 0.273 | 10.9 | |
| Tetrahydrocannabinolic acid (THCA) | 0.500 | <LOQ | <LOQ | |
| Δ8-THC | 0.500 | <LOQ | <LOQ | |
| Δ9-THC | 0.500 | 0.271 | 10.9 | |
| Δ10-THC-RS | 0.500 | <LOQ | <LOQ | |
| Δ10-THC-RR | 0.500 | 0.00161 | 0.0643 | |
| Total Cannabidiol (CBD) | - | 0.00194 | 0.0777 | |
| Cannabinadiolic acid (CBDA) | 0.500 | 0.000652 | 0.0261 | |
| Cannabidiol (CBD) | 0.500 | 0.00137 | 0.0549 | |
| Total Active Tetrahydrocannabivarin (THCV) | - | 0.00201 | 0.0805 | |
| Tetrahydrocannabivarinic acid (THCVA)* | 0.500 | <LOQ | <LOQ | |
| Tetrahydrocannabivarin (THCV) | 0.500 | 0.00201 | 0.0805 | |
| Total Active Cannabigerol (CBG) | - | 0.00349 | 0.139 | |
| Cannabigerolic acid (CBGA) | 0.500 | <LOQ | <LOQ | |
| Cannabigerol (CBG) | 0.500 | 0.00349 | 0.139 | |
| Cannabidivarin (CBDV) | 0.500 | <LOQ | <LOQ | |
| Cannabinol (CBN) | 0.500 | 0.00752 | 0.301 | |
| Cannabichromene (CBC) | 0.500 | 0.256 | 10.2 | |

| Cannabinoid Totals | Actual % (w/w) | mg/serving | Homogeneity [†] |
|--------------------|----------------|------------|--------------------------|
| Total Cannabinoids | 0.544 | 21.8 | |

* Analyte is not included in ISO 17025 scope of accreditation
† Concentration of individual samples must be ±25% of the mean concentration
Total Active CBD = CBD + (0.877 x CBDA); Total Active CBG = CBG + (0.878 x CBGA);
Total Active THC = (Δ9THC + Δ8THC + Δ10THC-RS + Δ10THC-RR) + (0.877 x THCA);
Total Active THCV = THCV + (0.867 x THCVA);

Serving Weight: 4 g

Lindsey Vento 09/12/2024
Micro Director

Lindsey Vento

Phyto-Farma Labs
49 John Hicks Drive
Warwick, NY 10990
(845) 202-9737





California Fragrance Company, Inc.

Contact Name:
Contact Phone:
License #: OCM-PROC-000009
Sample ID: 2409SMNY0084.0317



Phyto-Farma Labs
a Smithers company

CERTIFICATE OF ANALYSIS
Permit #: OCM-CPL-00004

Certificate: 6177.2

Terpene Total

Tested (0.07000%)

Sample Analysis

Date: 09/12/2024 01:50 PM

SOP: NY.SOPT.40.090

Sample Weight: 0.4589 g

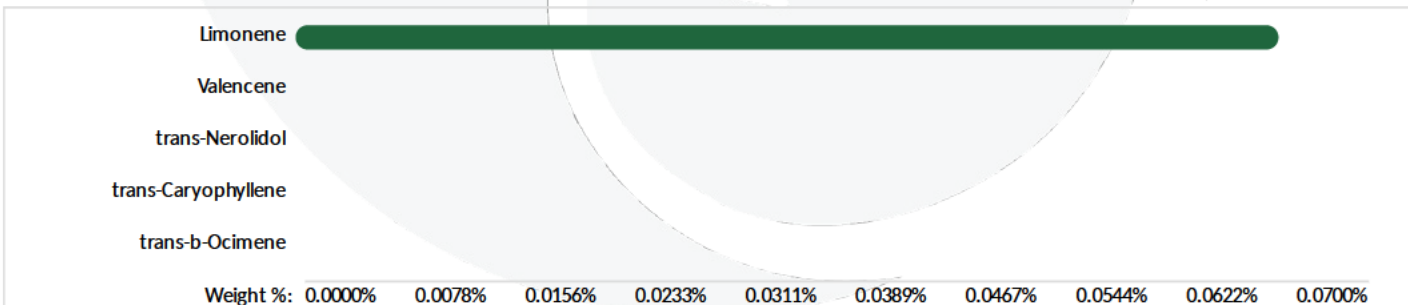
Analyzed By: GC-MS

Analyst: Stephanie Knapp

Table with 6 columns: Analyte, LOQ (%), Results (%), Analyte, LOQ (%), Results (%). Lists various terpenes and their results.

Summary table with 3 columns: Terpene Totals, %, Pass/Fail.

Total Terpenes 0.07000 N/A



Lindsey Vento
Micro Director

09/12/2024

Lindsey Vento

Phyto-Farma Labs
49 John Hicks Drive
Warwick, NY 10990
(845) 202-9737



This is a Phyto-Farma certification that relates only to the material tested and shall not be reproduced, unless in its entirety, without written approval from Phyto-Farma. Test results are confidential, unless explicitly waived.



Certificate: 6177.2

Trace Metals

Pass

Sample Analysis

Date: 09/12/2024 09:16 AM SOP: NY.SOPT.40.050
Analyzed By: ICP-MS Sample Weight: 0.1219 g
Analyst: Moni Kaneti

| Analyte | LOQ (µg/g) | Action Limit (µg/g) | Results (µg/g) | Pass/Fail |
|----------------|------------|---------------------|----------------|-----------|
| Antimony (Sb)* | 0.130 | 120 | <LOQ | PASS |
| Arsenic (As)* | 0.0700 | 1.50 | <LOQ | PASS |
| Cadmium (Cd)* | 0.0600 | 0.500 | <LOQ | PASS |
| Chromium (Cr)* | 0.360 | 1100 | <LOQ | PASS |
| Copper (Cu)* | 0.390 | 300 | <LOQ | PASS |
| Lead (Pb)* | 0.0800 | 0.500 | <LOQ | PASS |
| Mercury (Hg)* | 0.0100 | 3.00 | <LOQ | PASS |
| Nickel (Ni)* | 0.110 | 20.0 | <LOQ | PASS |

* Analyte is not included in ISO 17025 scope of accreditation

Mycotoxin Analysis

Pass

Sample Analysis

Date: 09/12/2024 09:38 AM SOP: NY.SOPT.40.180
Analyzed By: LC-MS/MS Sample Weight: 0.1 g
Analyst: Destiny Ribadeneyra

| Analyte | LOQ (µg/g) | Action Limit (µg/g) | Results (µg/g) | Pass/Fail |
|-------------------|------------|---------------------|----------------|-----------|
| Sum of Aflatoxins | - | 0.020 | 0 | PASS |
| Aflatoxin B1 | 0.0010 | 0.020 | <LOQ | PASS |
| Aflatoxin B2 | 0.0020 | 0.020 | <LOQ | PASS |
| Aflatoxin G1 | 0.0010 | 0.020 | <LOQ | PASS |
| Aflatoxin G2 | 0.0020 | 0.020 | <LOQ | PASS |
| Ochratoxin A | 0.0020 | 0.020 | <LOQ | PASS |

Lindsey Vento 09/12/2024
Micro Director

Lindsey Vento

Phyto-Farma Labs
49 John Hicks Drive
Warwick, NY 10990
(845) 202-9737



This is a Phyto-Farma certification that relates only to the material tested and shall not be reproduced, unless in its entirety, without written approval from Phyto-Farma. Test results are confidential, unless explicitly waived. All Pass/Fail results please reference state regulations released on 01FEB2024. Pass/Fail results do not use uncertainty, but is available upon request. The product represented has been tested by Phyto-Farma Labs using validated scientific methodologies. Note action levels are state determined thresholds for human safety and consumption. Acronym Definitions: ND - Not Detected, LOQ - Limit of Quantification, ULOQ - Upper Limit of Quantification; are terms used to describe the reliably measured smallest and largest concentrations. <LOQ* denotes the result is above detection limit, but below quantifiable limit. CFU - Colony Forming Units. Cannabis Product Sampling SOP# SOP.T.20.010.



Certificate: 6177.2

Pesticides LC

Pass

Sample Analysis

Date: 09/12/2024 09:48 AM SOP: NY.SOPT.040.270
Analyzed By: LC-MS/MS Sample Weight: 1 g
Analyst: Destiny Ribadeneyra

Table with 10 columns: Analyte, LOQ (ppm), Action Limit (ppm), Results (ppm), Pass/Fail. Contains two columns of pesticide analysis data.

* Analyte is not included in ISO 17025 scope of accreditation

Lindsey Vento 09/12/2024
Micro Director

Lindsey Vento

Phyto-Farma Labs
49 John Hicks Drive
Warwick, NY 10990
(845) 202-9737





California Fragrance Company, Inc.

Contact Name:
Contact Phone:
License #: OCM-PROC-000009
Sample ID: 2409SMNY0084.0317



Phyto-Farma Labs
a Smithers company

CERTIFICATE OF ANALYSIS

Permit #: OCM-CPL-00004

Certificate: 6177.2

Pesticides GC

Pass

Sample Analysis

Date: 09/12/2024 09:52 AM

SOP: NYS.SOPT.040.271

Analyzed By: GC-MS/MS

Sample Weight: N/A

Analyst: Destiny Ribadeneyra

| Analyte | LOQ (ppm) | Action Limit (ppm) | Results (ppm) | Pass/Fail |
|--------------------------|-----------|--------------------|---------------|-----------|
| Captan* | 0.300 | 1.00 | <LOQ | PASS |
| Chlordane* | 0.0700 | 1.00 | <LOQ | PASS |
| Chlorfenapyr* | 0.100 | 1.00 | <LOQ | PASS |
| Coumaphos* | 0.190 | 1.00 | <LOQ | PASS |
| Cyfluthrin* | 0.110 | 1.00 | <LOQ | PASS |
| Cypermethrin* | 0.240 | 1.00 | <LOQ | PASS |
| Fipronil* | 0.170 | 0.400 | <LOQ | PASS |
| Imazalil* | 0.170 | 0.200 | <LOQ | PASS |
| Methyl parathion* | 0.0900 | 0.200 | <LOQ | PASS |
| Pentachloronitrobenzene* | 0.170 | 1.00 | <LOQ | PASS |
| Trifloxystrobin* | 0.110 | 0.200 | <LOQ | PASS |

* Analyte is not included in ISO 17025 scope of accreditation

Lindsey Vento

09/12/2024

Lindsey Vento

Micro Director

Phyto-Farma Labs

49 John Hicks Drive
Warwick, NY 10990
(845) 202-9737



This is a Phyto-Farma certification that relates only to the material tested and shall not be reproduced, unless in its entirety, without written approval from Phyto-Farma. Test results are confidential, unless explicitly waived. All Pass/Fail results please reference state regulations released on 01FEB2024. Pass/Fail results do not use uncertainty, but is available upon request. The product represented has been tested by Phyto-Farma Labs using validated scientific methodologies. Note action levels are state determined thresholds for human safety and consumption. Acronym Definitions: ND - Not Detected, LOQ - Limit of Quantification, ULOQ - Upper Limit of Quantification; are terms used to describe the reliably measured smallest and largest concentrations. <LOQ* denotes the result is above detection limit, but below quantifiable limit. CFU - Colony Forming Units. Cannabis Product Sampling SOP# SOP.T.20.010.



Certificate: 6177.2

Residual Solvents

Pass

Sample Analysis

Date: 09/12/2024 11:37 AM

SOP: NYS.SOPT.040.272

Analyzed By: GC-MS

Sample Weight: 0.098 g

Analyst: Stephanie Knapp

| Analyte | LOQ (ppm) | Action Limit (ppm) | Results (ppm) | Pass/Fail |
|---|-----------|--------------------|---------------|-----------|
| 1,2-Dichloroethane (Ethylene dichloride, Ethylene chloride) | 0.100 | 5.00 | <LOQ | PASS |
| 2-Propanol (Isopropanol, Isopropyl alcohol) | 125 | 5000 | <LOQ | PASS |
| Acetone (2-Propanone) | 125 | 5000 | <LOQ | PASS |
| Acetonitrile | 23.6 | 410 | <LOQ | PASS |
| Benzene | 0.100 | 2.00 | <LOQ | PASS |
| Butanes, Total | 62.5 | 5000 | <LOQ | PASS |
| Chloroform | 1.50 | 60.0 | <LOQ | PASS |
| Dichloromethane (Methylene chloride) | 15.0 | 600 | <LOQ | PASS |
| Dimethyl sulfoxide (DMSO) | 125 | 5000 | <LOQ | PASS |
| Ethanol (Ethyl alcohol) | 125 | 5000 | <LOQ | PASS |
| Ethyl acetate (Acetic acid ethyl ester) | 125 | 5000 | <LOQ | PASS |
| Ethyl ether (Diethyl ether, 1,1'-Oxybisethane) | 125 | 5000 | <LOQ | PASS |
| Heptane (n-Heptane) | 125 | 5000 | <LOQ | PASS |
| Hexanes, Total | 14.5 | 290 | <LOQ | PASS |
| Methanol (Methyl alcohol) | 75.1 | 3000 | <LOQ | PASS |
| Pentanes, Total | 195 | 5000 | <LOQ | PASS |
| Propane | 63.0 | 5000 | <LOQ | PASS |
| Toluene (Methylbenzene) | 22.3 | 890 | <LOQ | PASS |
| Trichloroethane (1,1,1-) | 37.6 | 1500 | <LOQ | PASS |
| Tetrafluoroethane (1,1,1,2-) (HFC134a)* | 10.0 | 1000 | <LOQ | PASS |
| Xylenes, Total (ortho-, meta-, para-) | 109 | 2170 | <LOQ | PASS |

* Analyte is not included in ISO 17025 scope of accreditation

Lindsey Vento 09/12/2024
Micro Director

Lindsey Vento

Phyto-Farma Labs
49 John Hicks Drive
Warwick, NY 10990
(845) 202-9737



This is a Phyto-Farma certification that relates only to the material tested and shall not be reproduced, unless in its entirety, without written approval from Phyto-Farma. Test results are confidential, unless explicitly waived. All Pass/Fail results please reference state regulations released on 01FEB2024. Pass/Fail results do not use uncertainty, but is available upon request. The product represented has been tested by Phyto-Farma Labs using validated scientific methodologies. Note action levels are state determined thresholds for human safety and consumption. Acronym Definitions: ND - Not Detected, LOQ - Limit of Quantification, ULOQ - Upper Limit of Quantification; are terms used to describe the reliably measured smallest and largest concentrations. <LOQ* denotes the result is above detection limit, but below quantifiable limit. CFU - Colony Forming Units. Cannabis Product Sampling SOP# SOP.T.20.010.



California Fragrance Company, Inc.

Contact Name:
Contact Phone:
License #: OCM-PROC-000009
Sample ID: 2409SMNY0084.0317

Certificate: 6177.2

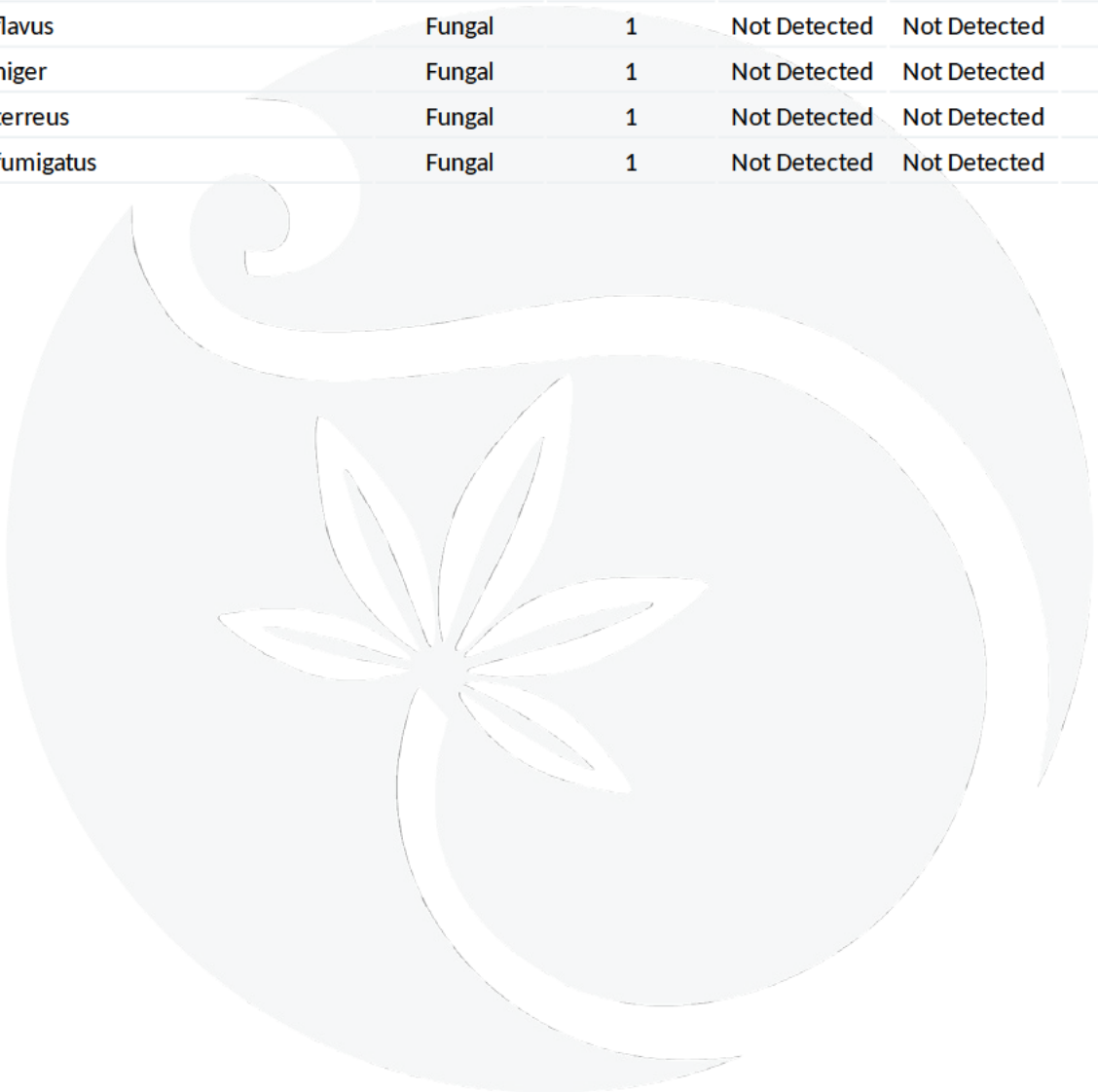
Microbial Impurities - MDG

Pass

Sample Analysis

Date: 09/12/2024 02:27 PM SOP: NYS.SOPT.40.273
Analyzed By: PCR
Analyst: Lindsey Vento

| Analyte | Microbial Type | LOQ (CFU/g) | Allowable Limit | Results | Pass/Fail |
|--|----------------|-------------|-----------------|--------------|-----------|
| Shiga toxin-producing Escherichia coli | Bacterial | 1 | Not Detected | Not Detected | PASS |
| Salmonella species | Bacterial | 1 | Not Detected | Not Detected | PASS |
| Aspergillus flavus | Fungal | 1 | Not Detected | Not Detected | PASS |
| Aspergillus niger | Fungal | 1 | Not Detected | Not Detected | PASS |
| Aspergillus terreus | Fungal | 1 | Not Detected | Not Detected | PASS |
| Aspergillus fumigatus | Fungal | 1 | Not Detected | Not Detected | PASS |



Lindsey Vento
Micro Director

09/12/2024

Lindsey Vento

Phyto-Farma Labs
49 John Hicks Drive
Warwick, NY 10990
(845) 202-9737



This is a Phyto-Farma certification that relates only to the material tested and shall not be reproduced, unless in its entirety, without written approval from Phyto-Farma. Test results are confidential, unless explicitly waived. All Pass/Fail results please reference state regulations released on 01FEB2024. Pass/Fail results do not use uncertainty, but is available upon request. The product represented has been tested by Phyto-Farma Labs using validated scientific methodologies. Note action levels are state determined thresholds for human safety and consumption. Acronym Definitions: ND - Not Detected, LOQ - Limit of Quantification, ULOQ - Upper Limit of Quantification; are terms used to describe the reliably measured smallest and largest concentrations. <LOQ> denotes the result is above detection limit, but below quantifiable limit. CFU - Colony Forming Units. Cannabis Product Sampling SOP# SOP.T.20.010.



Certificate: 6177.2

Microbial Impurities - TAPC

Pass

Sample Analysis

Date: 09/12/2024 12:40 PM SOP: NYS.SOPT.040.200
Analyzed By: Plating
Analyst: Kristy Lee

| Analyte | LOQ (CFU/g) | Action Limit (CFU/g) | Results (CFU/g) | Pass/Fail |
|-------------------------------|-------------|----------------------|-----------------|-----------|
| Total Aerobic Bacteria/CDP-TC | 5 | 10000 | 10 | PASS |

Microbial Impurities - TYMC

Pass

Sample Analysis

Date: 09/12/2024 03:29 PM SOP: NYS.SOPT.040.200
Analyzed By: Plating
Analyst: Kristy Lee

| Analyte | LOQ (CFU/g) | Action Limit (CFU/g) | Results (CFU/g) | Pass/Fail |
|----------------------|-------------|----------------------|-----------------|-----------|
| Total Yeast and Mold | 5 | 1000 | <LOQ | PASS |
| Mold Count | 5 | 1000 | <LOQ | PASS |
| Yeast Count | 5 | 1000 | <LOQ | PASS |

Water Activity

Pass

Sample Analysis

Date: 09/12/2024 10:07 AM SOP: NY.SOPT.040.210
Analyzed By: Water Activity Meter
Analyst: Moni Kaneti

| Analyte | LOQ (Aw) | Action Limit (Aw) | Results (Aw) | Pass/Fail |
|----------------|----------|-------------------|--------------|-----------|
| Water Activity | 0.25 | 0.85 | 0.69 | PASS |

Lindsey Vento 09/12/2024
Micro Director

Lindsey Vento

Phyto-Farma Labs
49 John Hicks Drive
Warwick, NY 10990
(845) 202-9737



This is a Phyto-Farma certification that relates only to the material tested and shall not be reproduced, unless in its entirety, without written approval from Phyto-Farma. Test results are confidential, unless explicitly waived. All Pass/Fail results please reference state regulations released on 01FEB2024. Pass/Fail results do not use uncertainty, but is available upon request. The product represented has been tested by Phyto-Farma Labs using validated scientific methodologies. Note action levels are state determined thresholds for human safety and consumption. Acronym Definitions: ND - Not Detected, LOQ - Limit of Quantification, ULOQ - Upper Limit of Quantification; are terms used to describe the reliably measured smallest and largest concentrations. <LOQ* denotes the result is above detection limit, but below quantifiable limit. CFU - Colony Forming Units. Cannabis Product Sampling SOP# SOP.T.20.010.