



California Fragrance Company, Inc.

Contact Phone:  
License #: OCM-PROC-000009  
Sample ID: 5589



**Phyto-Farma Labs**  
a Smithers company

**CERTIFICATE OF ANALYSIS**  
Permit #: OCM-CPL-00004

Certificate: 5589.1

## Wyld - Blood Orange Gummies - 10mg THC : 10mg CBC 10ct

Lot #: NY BO B2  
Sample ID: 5589

Regulatory Category: Adult Use  
Received: 07/25/2024

Sampling Location:

Lot Size: 1329

Sample Type: Edible

Amount Received: 3

Sample Collected: 07/24/2024 10:23 AM

Published: 08/01/2024



## COMPLIANCE FOR RETAIL

Cannabinoid Profile <b>Pass</b>	Terpenes Total <b>Tested</b>	Residual Solvents <b>Pass</b>	<b>Pass</b> Sample Status
Pesticides <b>Pass</b>	Mycotoxins <b>Pass</b>	Water Activity <b>Pass</b>	
Trace Metals <b>Pass</b>	Microbial Contaminants <b>Pass</b>	Moisture Analysis <b>Not Tested</b>	<b>0.000501%</b> Total CBD
	Filth & Foreign <b>Not Tested</b>		<b>0.491 %</b> Total Cannabinoids

Report Notes: N/A

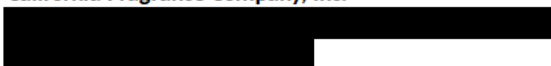
Kyle Rappaport  
Quality Director

08/01/2024

Phyto-Farma Labs  
49 John Hicks Drive  
Warwick, NY 10990  
(845) 988-0937



This is a Phyto-Farma certification that relates only to the material tested and shall not be reproduced, unless in its entirety, without written approval from Phyto-Farma. Test results are confidential, unless explicitly waived. All Pass/Fail results please reference state regulations released on 01FEB2024. Pass/Fail results do not use uncertainty, but is available upon request. The product represented has been tested by Phyto-Farma Labs using validated scientific methodologies. Note action levels are state determined thresholds for human safety and consumption. Acronym Definitions: ND - Not Detected, LOQ - Limit of Quantification, ULOQ - Upper Limit of Quantification; are terms used to describe the reliably measured smallest and largest concentrations. <LOQ> denotes the result is above detection limit, but below quantifiable limit. CFU - Colony Forming Units. Cannabis Product Sampling SOP# SOP.T.20.010.



Certificate: 5589.1

### Average Cannabinoid Profile

Pass

### Sample Analysis

Date: 08/01/2024 05:19 PM      SOP: NY.SOPT.40.260  
Analyzed By: HPLC      Sample Weight: N/A  
Analyst: N/A

Analyte	LOQ (%)	Average % (w/w)	mg/serving	Homogeneity <sup>†</sup>
Total Tetrahydrocannabinol (THC)	-	0.225	8.98	PASS
Tetrahydrocannabinolic acid (THCA)	0.500	<LOQ	<LOQ	
Δ8-THC	0.500	<LOQ	<LOQ	
Δ9-THC	0.500	0.225	8.98	
Δ10-THC-RS	0.500	<LOQ	<LOQ	
Δ10-THC-RR	0.500	<LOQ	<LOQ	
Total Cannabidiol (CBD)	-	0.000501	0.0200	
Cannabinadiolic acid (CBDA)	0.500	0.000571	0.0228	
Cannabidiol (CBD)	0.500	<LOQ	<LOQ	
Total Active Tetrahydrocannabivarin (THCV)	-	0.00136	0.0542	
Tetrahydrocannabivarinic acid (THCVA)*	0.500	0.000294	0.0117	
Tetrahydrocannabivarin (THCV)	0.500	0.00110	0.0440	
Total Active Cannabigerol (CBG)	-	0.00272	0.109	
Cannabigerolic acid (CBGA)	0.500	0.000436	0.0174	
Cannabigerol (CBG)	0.500	0.00234	0.0937	
Cannabidivarin (CBDV)	0.500	<LOQ	<LOQ	
Cannabinol (CBN)	0.500	0.00719	0.288	
Cannabichromene (CBC)	0.500	0.255	10.2	PASS

Cannabinoid Totals	Actual % (w/w)	mg/serving	Homogeneity <sup>†</sup>
Total Cannabinoids	0.491	19.7	PASS

\* Analyte is not included in ISO 17025 scope of accreditation  
† Concentration of individual samples must be ±25% of the mean concentration  
Total Active CBD = CBD + (0.877 x CBDA); Total Active CBG = CBG + (0.878 x CBGA);  
Total Active THC = (Δ9THC + Δ8THC + Δ10THC-RS + Δ10THC-RR) + (0.877 x THCA);  
Total Active THCV = THCV + (0.867 x THCVA);

Serving Weight: 4g

Kyle Rappaport  
Quality Director

08/01/2024  
*KRP*

Phyto-Farma Labs  
49 John Hicks Drive  
Warwick, NY 10990  
(845) 988-0937





Certificate: 5589.1

### Terpene Total

Tested (0.01000%)

### Sample Analysis

Date: 07/30/2024 07:04 PM

SOP: NY.SOPT.40.090

Sample Weight: 0.5147 g

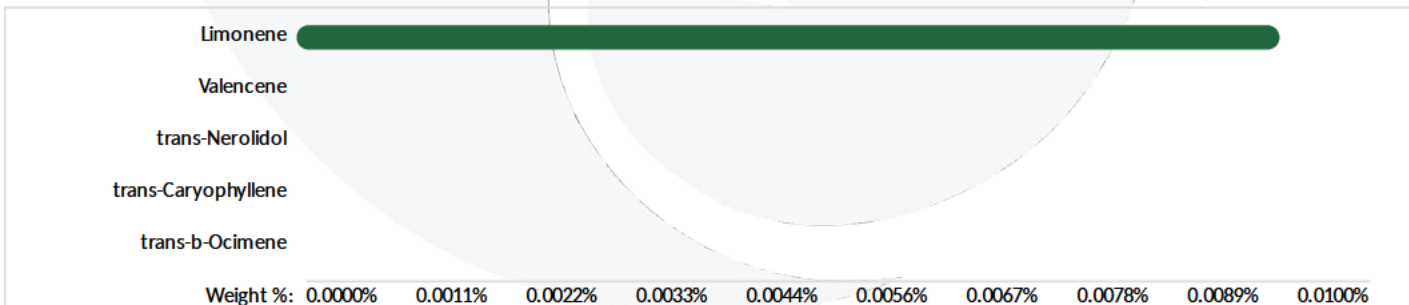
Analyzed By: GC-MS

Analyst: Destiny Ribadeneyra

Analyte	LOQ (%)	Results (%)	Analyte	LOQ (%)	Results (%)
3-Carene	0.0004200	<LOQ	gamma-Terpinene	0.0004400	<LOQ
alpha-Bisabolol	0.0005000	<LOQ	gamma-Terpineol	0.0003000	<LOQ
alpha-Humulene	0.0005600	<LOQ	Geraniol	0.0004800	<LOQ
alpha-Phellandrene	0.0006600	<LOQ	Geranyl acetate	0.0006200	<LOQ
alpha-Pinene	0.0004800	<LOQ	Guaiol	0.0006000	<LOQ
alpha-Terpinene	0.0002600	<LOQ	Isoborneol	0.0003400	<LOQ
alpha-Terpineol	0.0003400	<LOQ	Isopulegol	0.0006600	<LOQ
beta-Myrcene	0.0006400	<LOQ	Limonene	0.0007400	0.01000
beta-Pinene	0.0006600	<LOQ	Linalool	0.0004600	<LOQ
Borneol	0.0004600	<LOQ	Menthol	0.0004600	<LOQ
Camphene	0.0004400	<LOQ	Nerol	0.0005000	<LOQ
Camphor	0.0004000	<LOQ	Pulegone (+)	0.0005600	<LOQ
Caryophyllene oxide	0.0005800	<LOQ	Sabinene	0.0003400	<LOQ
Cedrene	0.0004400	<LOQ	Sabinene Hydrate	0.0004200	<LOQ
Cedrol	0.0005600	<LOQ	Terpinolene	0.0005000	<LOQ
cis-Nerolidol	0.0006800	<LOQ	trans-b-Ocimene	0.0004200	<LOQ
cis-Ocimene	0.0005200	<LOQ	trans-Caryophyllene	0.0006600	<LOQ
Eucalyptol	0.0007200	<LOQ	trans-Nerolidol	0.0007200	<LOQ
Farnesene	0.0008400	<LOQ	Valencene	0.0005600	<LOQ
Fenchone	0.0005000	<LOQ			

Terpene Totals	%	Pass/Fail
----------------	---	-----------

Total Terpenes	0.01000	N/A
----------------	---------	-----



Kyle Rappaport

08/01/2024

Quality Director

Phyto-Farma Labs

49 John Hicks Drive  
Warwick, NY 10990  
(845) 988-0937



PJLA Testing  
Accreditation #: 121747



Certificate: 5589.1

### Trace Metals

Pass

### Sample Analysis

Date: 07/29/2024 03:03 PM

SOP: NY.SOPT.40.050

Analyzed By: ICP-MS

Sample Weight: 0.1155 g

Analyst: Moni Kaneti

Analyte	LOQ (µg/g)	Action Limit (µg/g)	Results (µg/g)	Pass/Fail
Antimony (Sb)*	0.130	120	<LOQ	PASS
Arsenic (As)*	0.0700	1.50	<LOQ	PASS
Cadmium (Cd)*	0.0600	0.500	<LOQ	PASS
Chromium (Cr)*	0.360	1100	<LOQ	PASS
Copper (Cu)*	0.390	300	<LOQ	PASS
Lead (Pb)*	0.0800	0.500	<LOQ	PASS
Mercury (Hg)*	0.0100	3.00	<LOQ	PASS
Nickel (Ni)*	0.110	20.0	<LOQ	PASS

\* Analyte is not included in ISO 17025 scope of accreditation

### Mycotoxin Analysis

Pass

### Sample Analysis

Date: 08/01/2024 05:57 PM

SOP: NY.SOPT.40.180

Analyzed By: LC-MS/MS

Sample Weight: 0.1 g

Analyst: Destiny Ribadeneyra

Analyte	LOQ (µg/g)	Action Limit (µg/g)	Results (µg/g)	Pass/Fail
Sum of Aflatoxins	-	0.020	0	PASS
Aflatoxin B1	0.0010	0.020	<LOQ	PASS
Aflatoxin B2	0.0020	0.020	<LOQ	PASS
Aflatoxin G1	0.0010	0.020	<LOQ	PASS
Aflatoxin G2	0.0020	0.020	<LOQ	PASS
Ochratoxin A	0.0020	0.020	<LOQ	PASS

Kyle Rappaport

08/01/2024

Quality Director

Phyto-Farma Labs  
49 John Hicks Drive  
Warwick, NY 10990  
(845) 988-0937





Certificate: 5589.1

Pesticides LC

Pass

Sample Analysis

Date: 07/29/2024 03:07 PM SOP: NY.SOPT.040.270
Analyzed By: LC-MS/MS Sample Weight: 1 g
Analyst: Stephanie Knapp

Table with 10 columns: Analyte, LOQ (ppm), Action Limit (ppm), Results (ppm), Pass/Fail. Contains two columns of pesticide analysis data.

\* Analyte is not included in ISO 17025 scope of accreditation

Kyle Rappaport
Quality Director

08/01/2024
[Signature]

Phyto-Farma Labs
49 John Hicks Drive
Warwick, NY 10990
(845) 988-0937



This is a Phyto-Farma certification that relates only to the material tested and shall not be reproduced, unless in its entirety, without written approval from Phyto-Farma. Test results are confidential, unless explicitly waived. All Pass/Fail results please reference state regulations released on 01FEB2024. Pass/Fail results do not use uncertainty, but is available upon request. The product represented has been tested by Phyto-Farma Labs using validated scientific methodologies. Note action levels are state determined thresholds for human safety and consumption. Acronym Definitions: ND - Not Detected, LOQ - Limit of Quantification, ULOQ - Upper Limit of Quantification; are terms used to describe the reliably measured smallest and largest concentrations. <LOQ\* denotes the result is above detection limit, but below quantifiable limit. CFU - Colony Forming Units. Cannabis Product Sampling SOP# SOP.T.20.010.



California Fragrance Company, Inc.

Contact Phone:  
License #: OCM-PROC-000009  
Sample ID: 5589



**Phyto-Farma Labs**  
a Smithers company

**CERTIFICATE OF ANALYSIS**  
Permit #: OCM-CPL-00004

Certificate: 5589.1

### Pesticides GC

Pass

### Sample Analysis

Date: 07/29/2024 06:19 PM      SOP: NYS.SOPT.040.271  
Analyzed By: GC-MS/MS      Sample Weight: N/A  
Analyst: Stephanie Knapp

Analyte	LOQ (ppm)	Action Limit (ppm)	Results (ppm)	Pass/Fail
Captan*	0.300	1.00	<LOQ	PASS
Chlordane*	0.0700	1.00	<LOQ	PASS
Chlorfenapyr*	0.100	1.00	<LOQ	PASS
Coumaphos*	0.190	1.00	<LOQ	PASS
Cyfluthrin*	0.110	1.00	<LOQ	PASS
Cypermethrin*	0.240	1.00	<LOQ	PASS
Fipronil*	0.170	0.400	<LOQ	PASS
Imazalil*	0.170	0.200	<LOQ	PASS
Methyl parathion*	0.0900	0.200	<LOQ	PASS
Pentachloronitrobenzene*	0.170	1.00	<LOQ	PASS
Trifloxystrobin*	0.110	0.200	<LOQ	PASS

\* Analyte is not included in ISO 17025 scope of accreditation

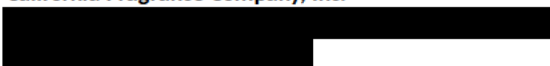
Kyle Rappaport  
Quality Director

08/01/2024

Phyto-Farma Labs  
49 John Hicks Drive  
Warwick, NY 10990  
(845) 988-0937



This is a Phyto-Farma certification that relates only to the material tested and shall not be reproduced, unless in its entirety, without written approval from Phyto-Farma. Test results are confidential, unless explicitly waived. All Pass/Fail results please reference state regulations released on 01FEB2024. Pass/Fail results do not use uncertainty, but is available upon request. The product represented has been tested by Phyto-Farma Labs using validated scientific methodologies. Note action levels are state determined thresholds for human safety and consumption. Acronym Definitions: ND - Not Detected, LOQ - Limit of Quantification, ULOQ - Upper Limit of Quantification; are terms used to describe the reliably measured smallest and largest concentrations. <LOQ\* denotes the result is above detection limit, but below quantifiable limit. CFU - Colony Forming Units. Cannabis Product Sampling SOP# SOP.T.20.010.



Certificate: 5589.1

### Residual Solvents

Pass

### Sample Analysis

Date: 07/29/2024 06:42 PM

SOP: NYS.SOPT.040.272

Analyzed By: GC-MS

Sample Weight: 0.1091 g

Analyst: Stephanie Knapp

Analyte	LOQ (ppm)	Action Limit (ppm)	Results (ppm)	Pass/Fail
1,2-Dichloroethane (Ethylene dichloride, Ethylene chloride)	0.100	5.00	<LOQ	PASS
2-Propanol (Isopropanol, Isopropyl alcohol)	125	5000	<LOQ	PASS
Acetone (2-Propanone)	125	5000	<LOQ	PASS
Acetonitrile	23.6	410	<LOQ	PASS
Benzene	0.100	2.00	<LOQ	PASS
Butanes, Total	62.5	5000	<LOQ	PASS
Chloroform	1.50	60.0	<LOQ	PASS
Dichloromethane (Methylene chloride)	15.0	600	<LOQ	PASS
Dimethyl sulfoxide (DMSO)	125	5000	<LOQ	PASS
Ethanol (Ethyl alcohol)	125	5000	<LOQ	PASS
Ethyl acetate (Acetic acid ethyl ester)	125	5000	<LOQ	PASS
Ethyl ether (Diethyl ether, 1,1'-Oxybisethane)	125	5000	<LOQ	PASS
Heptane (n-Heptane)	125	5000	<LOQ	PASS
Hexanes, Total	14.5	290	<LOQ	PASS
Methanol (Methyl alcohol)	75.1	3000	<LOQ	PASS
Pentanes, Total	195	5000	<LOQ	PASS
Propane	63.0	5000	<LOQ	PASS
Toluene (Methylbenzene)	22.3	890	<LOQ	PASS
Trichloroethane (1,1,1-)	37.6	1500	<LOQ	PASS
Tetrafluoroethane (1,1,1,2-) (HFC134a)*	10.0	1000	<LOQ	PASS
Xylenes, Total (ortho-, meta-, para-)	109	2170	<LOQ	PASS

\* Analyte is not included in ISO 17025 scope of accreditation

Kyle Rappaport

08/01/2024  
*KRP*

Quality Director

Phyto-Farma Labs  
49 John Hicks Drive  
Warwick, NY 10990  
(845) 988-0937



PJLA Testing  
Accreditation #: 121747

This is a Phyto-Farma certification that relates only to the material tested and shall not be reproduced, unless in its entirety, without written approval from Phyto-Farma. Test results are confidential, unless explicitly waived. All Pass/Fail results please reference state regulations released on 01FEB2024. Pass/Fail results do not use uncertainty, but is available upon request. The product represented has been tested by Phyto-Farma Labs using validated scientific methodologies. Note action levels are state determined thresholds for human safety and consumption. Acronym Definitions: ND - Not Detected, LOQ - Limit of Quantification, ULOQ - Upper Limit of Quantification; are terms used to describe the reliably measured smallest and largest concentrations. <LOQ\* denotes the result is above detection limit, but below quantifiable limit. CFU - Colony Forming Units. Cannabis Product Sampling SOP# SOP.T.20.010.



California Fragrance Company, Inc.

Contact Phone:  
License #: OCM-PROC-000009  
Sample ID: 5589



**Phyto-Farma Labs**  
a Smithers company

**CERTIFICATE OF ANALYSIS**  
Permit #: OCM-CPL-00004

Certificate: 5589.1

## Microbial Impurities - MDG

Pass

### Sample Analysis

Date: 07/30/2024 04:28 PM

SOP: NYS.SOPT.40.273

Analyzed By: PCR

Analyst: Lindsey Vento

Analyte	Microbial Type	LOQ (CFU/g)	Allowable Limit	Results	Pass/Fail
Shiga toxin-producing Escherichia coli	Bacterial	1	Not Detected	Not Detected	PASS
Salmonella species	Bacterial	1	Not Detected	Not Detected	PASS
Aspergillus flavus	Fungal	1	Not Detected	Not Detected	PASS
Aspergillus niger	Fungal	1	Not Detected	Not Detected	PASS
Aspergillus terreus	Fungal	1	Not Detected	Not Detected	PASS
Aspergillus fumigatus	Fungal	1	Not Detected	Not Detected	PASS

Kyle Rappaport

08/01/2024

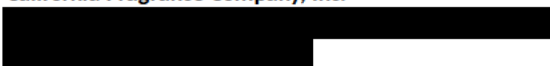
Quality Director

Phyto-Farma Labs  
49 John Hicks Drive  
Warwick, NY 10990  
(845) 988-0937



This is a Phyto-Farma certification that relates only to the material tested and shall not be reproduced, unless in its entirety, without written approval from Phyto-Farma. Test results are confidential, unless explicitly waived. All Pass/Fail results please reference state regulations released on 01FEB2024. Pass/Fail results do not use uncertainty, but is available upon request. The product represented has been tested by Phyto-Farma Labs using validated scientific methodologies. Note action levels are state determined thresholds for human safety and consumption. Acronym Definitions: ND - Not Detected, LOQ - Limit of Quantification, ULOQ - Upper Limit of Quantification; are terms used to describe the reliably measured smallest and largest concentrations. <LOQ> denotes the result is above detection limit, but below quantifiable limit. CFU - Colony Forming Units. Cannabis Product Sampling SOP# SOP.T.20.010.





Certificate: 5589.1

### Microbial Impurities - TAPC

Pass

#### Sample Analysis

Date: 07/26/2024 02:27 PM      SOP: NYS.SOPT.040.200  
Analyzed By: Plating  
Analyst: Lindsey Vento

Analyte	LOQ (CFU/g)	Action Limit (CFU/g)	Results (CFU/g)	Pass/Fail
Total Aerobic Bacteria/CDP-TC	5	10000	70	PASS

### Microbial Impurities - TYMC

Pass

#### Sample Analysis

Date: 07/30/2024 09:14 AM      SOP: NYS.SOPT.040.200  
Analyzed By: Plating  
Analyst: Kristy Lee

Analyte	LOQ (CFU/g)	Action Limit (CFU/g)	Results (CFU/g)	Pass/Fail
Total Yeast and Mold	5	1000	<LOQ	PASS
Mold Count	5	1000	<LOQ	PASS
Yeast Count	5	1000	<LOQ	PASS

### Water Activity

Pass

#### Sample Analysis

Date: 07/30/2024 06:47 PM      SOP: NY.SOPT.040.210  
Analyzed By: Water Activity Meter  
Analyst: Stephanie Knapp

Analyte	LOQ (Aw)	Action Limit (Aw)	Results (Aw)	Pass/Fail
Water Activity	0.25	0.85	0.69	PASS

Kyle Rappaport  
Quality Director

08/01/2024

Phyto-Farma Labs  
49 John Hicks Drive  
Warwick, NY 10990  
(845) 988-0937



This is a Phyto-Farma certification that relates only to the material tested and shall not be reproduced, unless in its entirety, without written approval from Phyto-Farma. Test results are confidential, unless explicitly waived. All Pass/Fail results please reference state regulations released on 01FEB2024. Pass/Fail results do not use uncertainty, but is available upon request. The product represented has been tested by Phyto-Farma Labs using validated scientific methodologies. Note action levels are state determined thresholds for human safety and consumption. Acronym Definitions: ND - Not Detected, LOQ - Limit of Quantification, ULOQ - Upper Limit of Quantification; are terms used to describe the reliably measured smallest and largest concentrations. <LOQ\* denotes the result is above detection limit, but below quantifiable limit. CFU - Colony Forming Units. Cannabis Product Sampling SOP# SOP.T.20.010.